

Reebok 11K Pump White



Reebok 11K Pump Black

Quater : Pro Armour IV
 Liner : Nash Grip
 Tongue : Hybrid Felt Foam
 Outsole : Lightweight Carbon

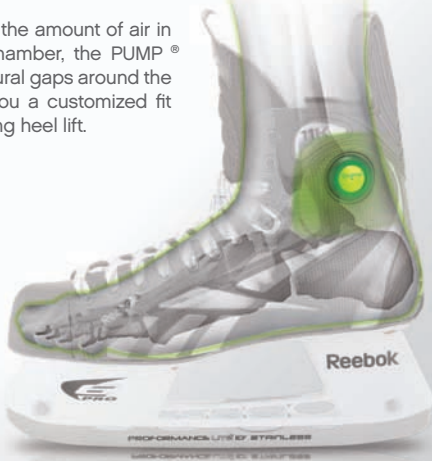
Holder : Reebok E-BLADE PRO
 Runner : LITE 10" STAINLESS
 Size : SR 6.0 - 12.0 (E) Full & Half
 Made in Canada

Quater : Pro Armour IV
 Liner : Nash Grip / Clarino (JR)
 Tongue : Hybrid Felt Foam
 Outsole : Lightweight Carbon

Holder : Reebok E-BLADE PRO
 Runner : LITE 10" STAINLESS
 Size : SR 6.0 - 12.0 (E,EE) Full & Half
 JR 3.0 - 5.5 (E) Full & Half
 Made in Canada / Thailand (JR)

THE PUMP®

By eliminating the amount of air in the internal chamber, the PUMP® eliminates natural gaps around the ankle giving you a customized fit while preventing heel lift.



PRO ARMOUR™ IV

Strategic integration of a lightweight core and a durable outer shell combine to make embedded composite technology.



ZONES:

- 1 SPINAL ZONE
Supports Achilles tendon to control flexion & torsion.
- 2 FLEXION ZONE
Harnesses flexion for better energy transfer.
- 3 ABRASION ZONE
Added durability. Resistance to cut and abrasion.

SKATELOCK™

Reebok proprietary Skatelock™ allows you to isolate two distinct lacing zones by tightening the top three eyelets independently of the forefoot.

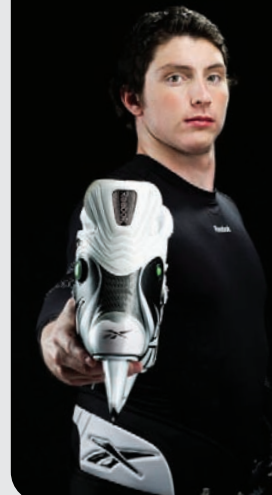


1 LOCKED



2 OPEN

WIDTH FIT DESIGN



AVAILABLE SIZING

[E/B] [EE/B]



Redesigned last shape provides 2 different heel and fore foot widths for all 11K skates.

Reebok 10K Pump Black



Quater : Max Armour IV
 Liner : CLARINO Wicking
 Tongue : Hybrid Felt Foam
 Outsole : Black Glass
 Holder : Reebok E-BLADE PRO
 Runner : LITE 10" STAINLESS
 Size : SR 6.0 - 12.0 (E) Full & Half
 Made in Thailand

Reebok 8K Pump White



Quater : Max Armour IV
 Liner : CLARINO Wicking
 Tongue : Felt / Saddle Lace-Bite
 Outsole : Titanium
 Holder : Reebok E-BLADE PRO
 Runner : LITE 10" STAINLESS
 Size : SR 6.0 - 12.0 (E) Full & Half
 Made in Thailand

Reebok 7K Pump Black



Quater : Max Armour IV
 Liner : Duratex / Duratex Grip (JR)
 Tongue : 7mm Felt / Foam , Lace-Bite
 Outsole : Synthetic Composite
 Holder : Reebok E-BLADE PRO
 Runner : LITE 10" STAINLESS
 Size : SR 6.0 - 12.0 (E) Full & Half
 JR 3.0 - 5.5 (E) Full & Half
 Made in Thailand

Reebok 6K Pump White



Quater : Max Armour IV
 Liner : Double Density Microfiber
 Tongue : 7mm Felt / Foam , Lace-Bite
 Outsole : Monofilament Composite
 Holder : Reebok E-BLADE PRO
 Runner : LITE 10" STAINLESS
 Size : SR 6.0 - 12.0 (E) Full & Half
 JR 1.0 - 5.5 (E) Full & Half
 Made in Thailand

Reebok 4K Pump



Quater : Sublimated Ballistic Nylon
 Liner : Double Density Microfiber
 Tongue : 7mm Felt / Foam , Lace-Bite
 Outsole : Injection Full Graphic
 Holder : Reebok E-BLADE (NRPL)
 Runner : STAINLESS
 Size : SR 6.0 - 12.0 (E) Full Only
 JR 1.0 - 5.5 (E) Full Only
 Made in Thailand

Reebok 2K



Quater : Sublimated Mesh
 Liner : Microfiber / Brushed Nylon (YT)
 Tongue : 7mm Felt / 5mm Felt (YT)
 Outsole : Injection / Low Profile (YT)
 Holder : Reebok E-BLADE (NRPL)
 Runner : STAINLESS
 Size : SR 6.0 - 12.0 (E) Full Only
 JR 1.0 - 5.5 (E) Full Only
 YT 8.0 - 13.0 (D) Full Only
 Made in Thailand

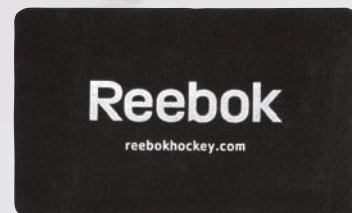
Reebok EXTENDABLE



Quater : Embossed Nylon
 Liner : Brushed Nylon
 Tongue : Felt
 Outsole : Low Profile
 Holder : E-BLADE (NRPL)
 Runner : Carbon
 Size : YT 8.0 - 10.0 (S)
 JR 10.0 - 13.0 (M)
 YT 13.0 - 2.0 (L)
 Made in China



LACE TIGHTNER
 Made in China



SKATE MAT
 Soft Carpet / Waterproof Rubber 29" x18"
 Made in China

REINFORCED BLADE COVER

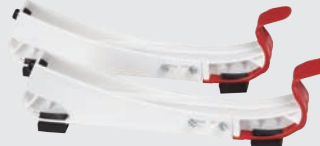
Made in China



BLADE COVER Made in China

STEP-IN

Made in Sweden



PLASTIC SKATE GUARD
 Made in China